

# synapse

THE CHESTER COUNTY HOSPITAL MAGAZINE | 2018 VOL 1

*Celebrating*



*Years of Serving*



Penn Medicine



# PROGRAMS TO **KEEP YOU WELL!**

## WELLNESS PROGRAMS

If you are looking to make healthier lifestyle choices, you will benefit from these educational programs offered by Chester County Hospital's Community Health and Wellness Services Department.

### WEIGHT MANAGEMENT

We can provide the guidance you need to create realistic strategies for successful weight management and support you on your journey to a healthier lifestyle and weight loss.



- **Weight Matters**— Realistic strategies for those struggling with unwanted weight.
- **Struggles and Solutions**— Monthly support for a healthier lifestyle and weight loss.
- **Nutrition Counseling** (610.738.2835)— Individualized guidance for healthy choices.



### SMOKING CESSATION

For many, the first step to better health is quitting smoking. **We know it is not easy.** Our programs have a proven track record of helping people become ex-smokers.

- **Stop Smoking Now! Program**— Identify your triggers and develop a plan to quit.
- **Smoking Cessation Support Group**— Help for those who quit or those who are still trying.

### DIABETES EDUCATION

Diabetes is an underlying condition that can complicate your health. The hospital offers programs to help you better understand diabetes and manage your daily health.



- **Reversing Pre-Diabetes**— Reduce your risk of getting type 2 diabetes with healthier choices.
- **National Diabetes Prevention Program** (610.738.2835)— Help for people with pre-diabetes or at high risk for developing diabetes.
- **Diabetes Self-Management Program** (610.738.2835)— Classes and counseling for those with type 1, type 2 or gestational diabetes.
- **Diabetes Support Group** (610.738.2835)— Monthly support for individuals and families.

### CHILDBIRTH EDUCATION

Whether you are a first-timer or an experienced parent, we offer carefully crafted and comprehensive programs to support you during pregnancy, labor, postpartum and parenthood.



- **Prepared Childbirth**— Be ready for birth in a four-week series or a one-day class.
- **Maternity Unit Tour**— Visit labor and delivery, nursery, maternity, and NICU.
- **Calm, Confident Birth**— Address beliefs, fears and concerns about birth and parenting.
- **Sibling Class**— Help the future big brothers and sisters (ages 3-7) prepare for a sibling.
- **Newborn Care**— Understand how to take care of your baby before they come home.
- **Prenatal Breastfeeding**— Learn to breastfeed and where to find support.
- **Pumping and Returning to Work**— Continue breastfeeding after maternity leave ends.
- **Childbirth Refresher**— For parents who just need a reminder about giving birth.

### HEALTHY BODIES

We offer high quality health education programs to address specific chronic health conditions. Special presentations, physician lectures, classes, screenings and support groups are available.



- **Heart Health**— Offerings include cardiovascular health risk assessments, blood pressure screenings, Hands-Only CPR training and cardiac support meetings.

- **Cancer Support**— The Abramson Cancer Center has local support groups and programs focused on the emotional effects of cancer.



- **Bones and Joints**— Programs include pre-surgery education, unit tour and tailored physical therapy.

### KEYNOTE SPEAKER REQUESTS

We have dynamic speakers who can address health care topics for your organization. Get started by calling 610.738.2542 to speak to a community health educator. Topics include:

- **Heart Health** (Risk Assessment, A-Fib, Strokes and Heart Attacks, Know Your Numbers)
- **Bone Health** (Osteoporosis, Arthritis, Joint Replacement)
- **Cancer Prevention** (Screening Recommendations, Prevention and Early Detection)
- **Women's Health** (Breast Health, Women and Heart Disease, Menopause, Pelvic Health)
- **Senior Health** (A Variety of Topics Available)
- **Screening Recommendations and Disease Prevention**



- **Nutrition** (Healthy Eating, Diet and Weight Loss, Super Foods)
- **Diabetes** (Prevention, Treatment, Diet and Lifestyle)

Program descriptions, schedules, fees, locations and registration information can be found at [ChesterCountyHospital.org/wellness](http://ChesterCountyHospital.org/wellness) or by calling 610.738.2300 (unless another phone number is noted).

### DEAR NEIGHBORS



Chester County Hospital is a modern facility packaged in a historic structure. Our building exudes character, from the terra cotta roof to the marble accents to the iconic bronze medallion that pays tribute to our history. The hospital's charm is endearing, but it's the smart people, the advanced technology and the best-practice services that create the memorable patient experience. Throughout 2017, we celebrated the hospital's 125th anniversary. Half of this edition of Synapse pays homage to our founding purpose from 1892 and our growth in the intervening years. The second part of the magazine looks forward. Last April, we launched the largest hospital expansion project since the current building first opened in 1925. If you've been to our East Marshall Street campus in the past few months, you may have wondered what is happening in our parking lot and why. We've contracted Ballinger for architectural engineering and LF Driscoll for construction. Both partners collaborated on the writing for this issue so you can understand the thought process, the design concepts and the modern features of the new addition. We are happy to share how we are setting the stage for the next 125 years.

Warm regards,

Michael J. Duncan  
President and CEO

# Contents

### cover story

#### 2.... 125 YEARS OF SERVICE

Chester County Hospital spent 2017 reflecting on its last 125 years. We've come a long way! From our earliest days as an independent, 10-bed dispensary near Marshall Square Park we have advanced in technology and physical growth in partnership with Penn Medicine at our East Marshall Street location. Through it all, our vision has never wavered. Our mission to serve our community is at the very core of what we do every day.

### feature

#### 8.... SETTING THE STAGE FOR THE NEXT 125 YEARS

In just a few short years, Chester County Hospital will open the doors to an expansion project that will add 99 more private patient rooms, advanced operating room suites, a larger Emergency Department and a new front entrance. This significant addition is intended to be more than just extra space, it has been designed with modern medicine and the patient experience at the forefront of all architectural and construction decisions. In this article, our friends at Ballinger and LF Driscoll give their insight into building the future of care in Chester County.

### departments

#### 15.... OUR NEW PHYSICIANS

Biographies of our newest physicians on staff

#### 17.... THE ENCORE SHOP RAVE

Great design deserves a second act, especially when the results benefit a worthy cause. For over 40 years The Encore Shop, an upscale consignment store in Kennett Square, has served consignors who have quality merchandise to offer and customers who are seeking chic jewelry, clothing, high-end accessories and small antiques. All proceeds benefit Chester County Hospital.



## synapse

SYNAPSE MAGAZINE SINCE 1981

Synapse is an award-winning publication produced by Chester County Hospital's Corporate Marketing Department. The articles provided in this magazine are solely for informational purposes. It should not be relied on or used in placement of a physician's medical advice or assessment. Always consult a physician in matters of your personal health.

William W. Wylie, Jr. Chair, Board of Directors  
Michael J. Duncan President and CEO  
Colleen Leonard Leyden Editor-in-Chief  
Lisa M. Huffman Managing Editor  
Diana L. Walker Managing Editor  
Danielle Howley Designer  
Great Atlantic Graphics Printer

Feedback Welcome  
Email [synapse@uphs.upenn.edu](mailto:synapse@uphs.upenn.edu) to let us know what you think, to make suggestions about future topics or to change your mailing information.





# 125

*Years of Service*

## STILL ROOTED IN ITS ORIGINAL MISSION, CHESTER COUNTY HOSPITAL CELEBRATES ITS QUASQUICENTENNIAL

In the last decade of the 1800s, the heart of Chester County – West Chester – was a thriving community of 8,000 people. There were private and public educational institutions, as well as churches, commercial businesses, rail service, a newspaper and an established fire company. Physicians, too, had lived and practiced in Chester County since before the American Revolution, and the Chester County Medical Society – thought to be the oldest of its kind in Pennsylvania – was flourishing.

But, it did not have a hospital.

*continued >*



**EARLIEST ROOTS**

For a time in the early 1880s, two doctors opened a small dispensary in two rented rooms above the local hardware and gunsmith shop in the Borough. It was for the poor and indigent, but it closed after just two years due to lack of revenue, even though it was treating about 35 patients each week.

The dispensary may have failed, but the seed for a hospital had been planted. The community had witnessed what a local medical facility could provide. Before long, there was renewed activity to spur the establishment of a hospital.

On May 19, 1892, local citizens joined with physicians at a public meeting to discuss the possibility of a hospital for West Chester. As a result, committees were formed to solicit

contributions and to prepare a charter and the rules of organization. They all agreed, "We think it is the duty of Chester County to care for her own," and documented their reasoning for the Chester County Medical Society to circulate to the people of Chester County.

The committee noted the inconvenience and danger of sending patients needing immediate care to hospitals in Philadelphia, and said a local facility could serve both the needy and "well-to-do — a source of revenue for its support."

By the end of the summer, a Board of Managers was selected and eight physicians were appointed to provide medical care at the planned hospital on a rotating basis. A charter was granted to the founders of "The West Chester Hospital" on September 12, 1892,

making it the first hospital in Chester County. The name was changed to "The Chester County Hospital" one year later.

Dr. Thomas D. Dunn was elected first president of the Medical Staff. He is credited with being the driving force behind the hospital's establishment. "It was through his efforts that this hospital was first founded; its prosperity was the dearest wish of his heart; upon it he lavished time, strength and energy," stated the hospital's 1898 annual report.



*Dr. Thomas D. Dunn, first president of Chester County Hospital's Medical Staff*

**BREAKING NEW GROUND**

Wasting no time, Dr. Dunn and the founders purchased land on the north side of Marshall Square Park and construction began in late October. Community support was widespread through the planning of concerts, dances, cake sales and children's fairs to raise money. Despite the vigorous fundraising, funds were limited. The Board of Managers was undeterred and proceeded with constructing the rear portion of the main building to house patients until the total facility could be completed.

The hospital, which featured a kitchen/equipment room on the first floor and two patient wards and a room for the head nurse on the second floor, opened in March 1893. On March 3, the hospital admitted its first surgical patient – Benjamin Bush.

Bush was discovered lying near the West Chester Railroad tracks with both legs badly mangled. He was carried to the baggage room of the Market Street train station where Drs. Isaac Massey and Thomas D. Dunn were summoned to bandage his limbs. Bush was loaded



*Chester County Hospital, 1892*

onto a grocery wagon and carted to the hospital where his legs were amputated.

The surgery took place in the hospital's kitchen. Dr. Massey led the surgical procedure. He was assisted by several physicians including Drs. Mary Cheyney, Ellwood Patrick and Joseph Scattergood, Sr.

Dr. Scattergood described the scene: "Everybody was jammed together around the operating table... when we ran short of ligatures Dr. McClurg pulled some black silk thread from his pocket which was used to tie off arteries. Naturally, infection followed. Only the instruments had been boiled and they were few at that. None of the emergency ligatures were sterilized, but the patient survived."

Bush was a Civil War Union soldier. His plight generated great compassion, and the community contributed to the purchase of artificial legs for him. His case also strengthened community support for the new hospital.

**COMMUNITY SUPPORT**

Within a few months of the hospital opening, the women of Chester County enthusiastically rallied behind it and pledged their support. The Women's Auxiliary soon ballooned to eight branches and nearly 400 members. The Women were fervent in their desire to further the cause of the hospital in the community. They organized donation

days to help replenish the supply cupboard and created many fundraisers, such as spelling bees and lectures, to raise funds.

With the community squarely behind the new hospital, it quickly grew from a five-cot room to a 44-bed facility. Separate wards for men, women, children and obstetrics were added. The size of the Medical Staff grew, as well, and a Training School for Nurses was opened. Students attended year round, and eventually a nurses' residence was built on

Matlack Street adjacent to the hospital on Marshall Square.

Because of its need for more space and a modern infrastructure, the Board of Managers continued to invest in the growth of the building. By 1899, the brick hospital had a women's ward on the east wing of the building and a men's ward on the west. A self-contained contagious ward was added in 1904 and would prove to be an important addition with the onset of typhoid, measles, scarlet fever and the Spanish Flu.



*Benjamin Bush, the hospital's first surgical patient*

Despite all of the advances within the facility at Marshall Square Park, Chester County Hospital was in need of a larger and more modern building. This was a major concern of the Board of Managers and Medical Staff in the late 1910s and early 1920s.

**OUR LONGWOOD CONNECTION**

The nationwide Spanish Flu epidemic of 1918 reached Chester County in the fall of that year and the hospital admitted 240 patients. The influenza outbreak forever changed Chester County Hospital, because among its victims was a young man named Lewes A. Mason, an employee of industrialist Pierre S. du Pont of Longwood Gardens.

Mason was no stranger to Chester County Hospital, having received treatment there in 1916 after injuring his hip. Due to the great care he received then, du Pont summoned hospital physicians to come attend to Mason at his Longwood farm when Mason contracted the Spanish Flu.

Despite their best efforts, hospital physicians could not save Mason. This devastating loss inspired du Pont to make a grand gesture to thank Chester County Hospital and the care the physicians gave to Mason.

After long believing that "charity was best, when it began at home," du Pont envisioned an expanded state-of-the-art facility that would serve the people of West Chester and the neighboring communities. He facilitated this idea with a \$1 million gift, and his personal involvement in the design and construction. The hospital's annual report of 1918 called it "a burst of sunlight after the storm." (*Pierre S. du Pont A Rare Genius*)

**A NEW LOCATION OVERLOOKING THE BOROUGH**

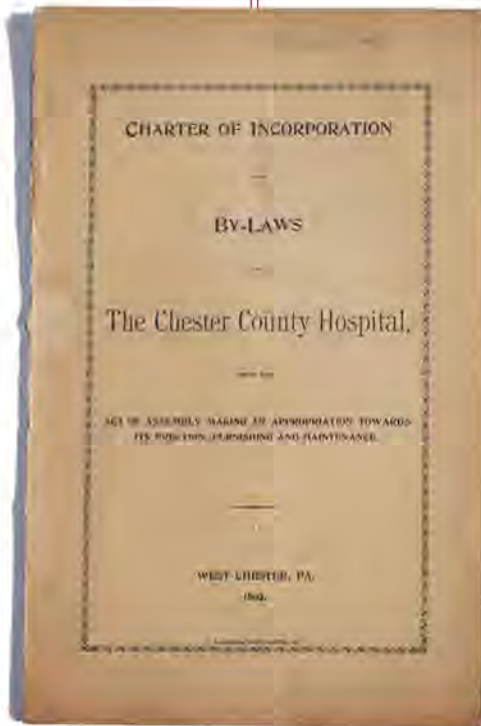
Though plans were drawn after consulting with architects, the recession after World War I impeded construction on the new facility initially. By 1923, it was decided that the only suitable means of expanding and modernizing Chester County Hospital was to build an entirely new hospital. Finally, in 1924, with du Pont's approval, land for the new hospital was purchased on a hill overlooking the Borough of West Chester and the hospital still resides there today.

From the moment he committed to expanding and modernizing the hospital, du Pont and his wife, Alice, were involved in every major facet of the hospital's development. They were there for the groundbreaking on March 20, 1924, where they helped set the cornerstone in place. He set up a building fund – with 10,000 shares of DuPont Company stock — and another fund



*Lewes A. Mason, photo courtesy of Hagley Museum and Library*

*continued >*



*A copy of the hospital's original 1892 Charter of Incorporation*





Alice and Pierre S du Pont laying Cornerstone, photo courtesy of Hagley Museum and Library

embarks on its largest expansion project since 1925. In the intervening years, the hospital witnessed the growth of its facility, the expansion of its Medical Staff and the modernization of its technology. It healed the community during depressions, recessions, wars, epidemics and financial crises. It welcomed and flourished under the leadership styles of Norman W. Skillman, H.L. Perry Pepper and Michael J. Duncan.

for the maintenance of the institution. Mrs. du Pont chose the linens, tea sets and china. Pierre S. du Pont selected and worked closely with the architects, York & Sawyer, and he insisted the hospital consult an efficiency expert. The du Ponts were actively involved in the hospital's growth and success until her passing in 1944 and his death in 1954.

The hospital opened at its new location on East Marshall Street in 1925. Architecturally inspired by the du Ponts' visit to the Palazzo Pitti in Florence, Italy, the new building featured smooth white stucco walls, open porches for fresh-air healing, terra cotta roof tiles and marble accents. In memory of Lewes A. Mason, a large, polished bronze medallion was inlaid in the floor where patients, visitors, doctors and staff entered.

Today, despite the many new additions and expansions over the years, the gleaming medallion is once again welcoming everyone to the front entrance as the hospital

### FOSTERING THE CULTURE

Thinking back upon its founding years, the hospital set out to serve the community. "The purpose for which the corporation is formed is to...be open to all classes, without distinction of color or creed...and no cases of sickness or injury shall be refused admission to [the] hospital on account of the inability of the [patient] to pay the expenses of care and treatment..."

Through its entire 125 years, Chester County Hospital has stayed true to its core mission to take care of its community without condition. Passed down from generation to generation, the focus has stayed on the patient and taking care of patients as if they are our own family, friends and neighbors.

"The leadership came from each of [the employees]," retired President Pepper said. "They were very proud of what they did, they knew what the right thing to do was, and they all worked effectively together. So this self-directed DNA [is] just part of the culture."

Current President Duncan agrees, "Everyone who walks through the door is some employee's family, friend or neighbor. That colors everything we do. We make eye contact. We greet each person. We cry when somebody loses a relative in an untimely way. It's just so deeply personal and meaningful."

Committed to preserving what he calls the hospital's "secret sauce," Duncan and his senior team implemented the hospital's iCARE values of Innovation, Collaboration, Accountability, Respect and Excellence. He also instilled his personal leadership philosophy: Love people. Expect Excellence.

### US, ONLY BETTER

Keeping love in the forefront of patient care spurred a growth curve in 2012. It was during this time we recognized that in order to sustain and meet the growing health needs of the community, we could no longer do it alone. Through Duncan's guidance, Chester County Hospital became part of Penn Medicine in September 2013.

When it came to making a choice, "Penn was head and shoulders above everyone else because they want us to be more than we are today, and they were willing to invest more in our facility and technology and bring in new clinical programs," Duncan said. "They were appreciative of our existing culture and they wanted a relationship where the local management team would be responding to the needs of the local community."

Chester County Hospital's journey before Penn Medicine was deeply rooted in the guiding principle that "We think it is the duty of Chester County to care for her own." That



mission has not changed. How to best serve Chester County and its surrounding neighbors continues to be the driving force for decisions on what new services to add, what type of features need to be in the new building that is currently under construction, and who are the best ambassadors to deliver care at the bedside.

The first 125 years of our history may be behind us, but our story about our devotion to serve our community continues to unfold.

*In November, the hospital published a commemorative book documenting 125 Stories about its leaders, legends and game changers.*



Chester County Hospital in the early 1900s



Chester County Hospital, 2014





SETTING  
THE  
**STAGE**  
FOR THE NEXT  
**125 YEARS**





//  
*This construction project is the largest ever in the hospital's history and propels it into the vanguard of 21st century health care.*  
 //

//  
 – Louis Meilink, Jr.  
 AIA, ACHA, ACHE  
 Ballinger

## Architectural Planning and Design

DRAWING ON CHESTER COUNTY HOSPITAL'S PAST TO PLAN FOR ITS FUTURE, THE FORTHCOMING SURGICAL PLATFORM AND BED TOWER WILL BE A TRANSFORMATIONAL EXPERIENCE. THE EXPANSION IS INSPIRED BY THE CLASSIC TUSCAN DESIGN THAT PIERRE. S. DU PONT CHAMPIONED BACK IN THE 1920S, AND THE RECENT WORK AT LASKO TOWER, COMPLETED IN 2014.

### The project includes:

- New main entrance with pharmacy, café, gift shop and conference room
- Modern procedural platform with 18 rooms, including state-of-the-art operating rooms and interventional hybrid/procedure rooms
- Expanded emergency department
- 99-bed tower for patient care
- Rooftop helipad

This history-making expansion occupies the hospital's current front yard. LF Driscoll's construction methods protect the hospital both while it is under construction and well into the future.

To facilitate construction of the new building, the expansion team started by upgrading the historic south entrance to Chester County Hospital's campus, allowing the main entrance to be closed. Phasing and construction have been carefully coordinated with the Medical Staff to minimize disruption to hospital operations. The majority of the construction required to prepare for the expansion was completed at night. Dust and vibration control measures have been taken throughout the process to ensure that the hospital operates safely while new spaces are built.

Planning for an expansion of this size and complexity requires consensus building among multiple stakeholders to answer critical questions.

### FROM BIG PICTURE IDEAS...

- *What will health care look like in 10 years? In 30 years? Who are our patients now and in the future?*
- *Who will our clinicians and caregivers be?*
- *What will motivate them?*
- *What do we value most about our current institution?*

### ...TO THE IMPORTANT DETAILS

- *What is the optimal size for a hospital room?*
- *What materials are both durable and beautiful?*
- *What type of ceiling system should be used in the procedure rooms?*

Chester County Hospital adopted an open-door policy for planning. With the help of Ballinger architects, the hospital engaged multiple stakeholders with innovative design techniques throughout the process. Both 3D models and full-scale mock-ups were utilized to test and ensure that the design of the rooms was optimized for the experience of both the medical provider and patient.

The architects also incorporated concepts from evidence-based design research to plan for the ultimate healing environment. For example, opera-

tional flow mapping from the patient experience perspective revealed opportunities to eliminate unnecessary steps, allowing caregivers to provide more effective direct patient care.

The ambitious new expansion project is transformational while staying true to Chester County Hospital's architectural roots.

## A New Pavilion Design: Courtyards and Connections

The simplicity of the new glass elements and courtyards will complement the white stucco and terra cotta roofs of the existing campus and new bed tower. These features will allow for intuitive wayfinding while providing access to daylight and nature. Patients,

family and staff have access to exterior courtyards and the surrounding landscape.

A new ground floor courtyard will serve as a verdant extension of the lobby, with places to sit under a canopy of Ginkgo trees. Two beautiful conference rooms and a modern elevator lobby will look into this courtyard. At the upper level, private relaxing spaces will be filled with the color and fragrance of perennials to create a healing garden for calm reflection.

The building is designed with LEED Silver certification as the goal. The vegetated green roof above the procedural platform will enhance patient room views and the hospital's sustainability.

An adjacent parking garage, which opened in 2016, allows for better access to care.



next 125 years... *continued*



## A New Front Door is the Gateway to Advanced Capabilities and Amenities

A welcoming arrival court and distinct entrance will enrich the patient experience. Once inside, patients will be greeted with an inviting light-filled lobby and panoramic views. In fact, the lobby will feel like an extension out into the courtyard and beyond.

Careful consideration has been given to the material palette to ensure that it is

warm and inviting but also durable.

The positioning of the entrance is purposefully separate from the busy Emergency Department entrance, allowing for a more tranquil approach.

Across the campus, visitors will experience a living landscape featuring meadow gardens of grasses and wildflowers. A sculptural landform will rise up out of the arrival court and provide a focal point. Asters, Bee Balm, Little Bluestem and other species native to Chester County will attract pollina-

tors and birds, bringing color, life and seasonal change to the meadow gardens. The construction team is part of Chester County Hospital's community and that alignment informs everything from specific construction decisions to communication measures.

During construction, the team is using disinfection and wall closure techniques that mitigate future issues once the walls in the new tower are finished. Extensive quality control measures ensure the building's exterior envelope does not allow outside air or moisture into the building. United by its mission of bringing progressive care to the Chester County community, the construction, architecture and medical teams work in harmony to deliver this leading-edge expansion to Chester County Hospital.

Noteworthy design aspects to take effect immediately upon opening are:

- Private inpatient, prep/recovery and emergency rooms
- Co-location of surgical and interventional suites for collaboration and future flexibility, a major accomplishment for a community hospital
- Smart technologies are embedded throughout the facility
- Flexibility to become a trauma center
- A new rooftop helipad

*continued >*





The design is future-thinking with the ability to change. While no one can predict the future, good facility design can enable it. Implementing programmatic innovation today provides the flexibility to be ready for tomorrow.

### Designing a Better Space for Healing

We are building an environment that fosters healing by giving patients and their family's choice and control, and

offers care providers a compelling place to work.

This new space will resonate with the needs of patients, families and medical providers and will support the values of a community-based hospital. Chester County will benefit from having urban innovation right here in the suburbs. The expansion will allow more space for the most sophisticated medical procedures, provide more personalized care for inpatients, increase the patient care

space in the Emergency Department and allow local residents and the surrounding communities to stay close to home to receive the highest quality of care.

It is an elegant, forward-looking design rooted in the hospital's architectural tradition as well as its lasting mission:

To be the leading provider of care in the region and a national model for quality, service excellence and fiscal stewardship.



## new physicians

### Section of Orthopaedics

#### Michael R. Murray, MD

Dr. Murray is a board-certified Orthopaedic Surgeon specializing in minimally-invasive spine surgery, cervical spine surgery, and advancing the delivery of spine care. Dr. Murray earned his medical degree at the University of Illinois at Chicago. He completed his internship and his residency in orthopaedic surgery at McGaw Medical Center of Northwestern University in Chicago. Afterward, he completed his spine surgery fellowship at Emory University Spine Center in Atlanta. Dr. Murray practices at Penn Orthopaedics in Exton, West Grove and Westtown.



#### Stephen Liu, MD

Dr. Liu is a board-certified Orthopaedic Surgeon specializing in disorders of the shoulder, elbow, wrist and hand. Dr. Liu received his medical degree from Tufts University School of Medicine in Boston. He completed his internship and residency in orthopaedic surgery at the Hospital of the University of Pennsylvania. He finished his fellowship at the University of Pittsburgh Medical Center in hand and upper extremities. Dr. Liu sees patients at Penn Orthopaedics in Exton, as well as at Penn Medicine Valley Forge.



### Section of Emergency Medicine

#### Tamara Donatelli, DO

Dr. Donatelli earned her medical degree from Philadelphia College of Osteopathic Medicine. She completed her residencies at Hahnemann University Hospital and Lankenau Medical Center. Dr. Donatelli treats patients at Chester County Hospital as part of Emergency Care Specialists.



### Section of Endocrinology

#### Arti A. Patel, MD

Dr. Patel earned her medical degree at St. George's University in Grenada. She completed her residency at Newark Beth Israel Medical Center in New Jersey and then finished her fellowship at Mount Sinai School of Medicine in New York. Board certified in the fields of Pediatrics and Internal Medicine, she practices at Gateway Endocrinology in West Chester.



### Section of Infectious Diseases

#### Shafnaz Akhter, MD

Dr. Akhter earned her medical degree from the Perelman School of Medicine at the University of Pennsylvania. She completed her residency and her fellowship at the Hospital of the University of Pennsylvania. Board certified in the field of Infectious Diseases, she will soon have an office in West Chester.



### Section of Family Medicine

#### Michael D. Kirk, MD

Dr. Kirk earned his medical degree from Pennsylvania State University College of Medicine. He completed his residency at Reading Hospital and Medical Center. Board certified in the field of Family Medicine, Dr. Kirk practices at Penn Family Medicine Unionville.

#### Theresa Metanchuk, DO

Dr. Metanchuk earned her medical degree at the Philadelphia College of Osteopathic Medicine. She completed her residency at St. Joseph Medical Center. Board certified in the field of Family Medicine, she practices at Penn Family Medicine Southern Chester County in West Grove.



### Section of Cardiology

#### Ramprasad Gadi, MD

Dr. Gadi earned his medical degree at Kilpauk Medical College in India. He completed his residency at Abington Memorial Hospital and then finished his fellowship at Albert Einstein Medical Center. Board certified in the field of Internal Medicine, he practices at West Chester Cardiology.



### Section of Internal Medicine - Hospitalist

#### Amit Shori, MD

Dr. Shori earned his medical degree at the Medical College of Ohio. He completed his internship and residency at the University of Illinois at Chicago. Board certified in the field of Internal Medicine, Dr. Shori is a Hospitalist who treats inpatients at Chester County Hospital.



#### Mary B. Wirshup, MD

Dr. Wirshup earned her medical degree from Eastern Virginia Medical School. She completed her residency at Lancaster General Hospital. Board certified in the field of Family Medicine, Dr. Wirshup treats patients at Community Volunteers in Medicine (CVIM) in West Chester. She is the Vice President of Medical Affairs for CVIM.

*continued >*



## new physicians

### Section of Nephrology

#### Manjula Sharada Naik, MD

Dr. Naik earned her medical degree at Kasturba Medical College, Manipal in India. She completed her internship and residency at Forest Hills Hospital in New York. Afterward, she finished her fellowship at Cooper University Hospital in New Jersey. Board certified in the field of Internal Medicine, Dr. Naik practices at Clinical Renal Associates, Ltd. in Exton.

### Section of Obstetrics/Gynecology

#### Adi Hirshberg, MD

Dr. Hirshberg earned her medical degree at Stony Brook University School of Medicine in New York. She completed her residency and her fellowship at the Hospital of the University of Pennsylvania. Board certified in the field of Obstetrics/Gynecology, she practices at Penn Maternal Fetal Medicine in West Chester.



### Section of Reproductive Endocrinology

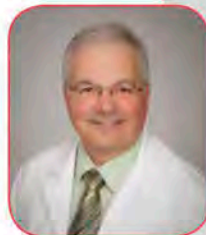
#### Allison J. Bloom, DO

Dr. Bloom earned her medical degree at Nova Southeastern University College of Osteopathic Medicine in Florida. She completed her residency at Drexel University College of Medicine. Board certified in the field of Obstetrics/Gynecology, she practices at Main Line Fertility in Paoli.

### Section of Palliative Medicine

#### Michael M. Soojian, MD

Dr. Soojian earned his medical degree at Dartmouth Medical School in New Hampshire. He completed his internship, residency and fellowship at Hahnemann University Hospital. Board certified in the fields of Internal Medicine, Palliative Medicine, Medical Oncology and Hematology, Dr. Soojian is a palliative care consultant for patients at Chester County Hospital.



### Section of Podiatry

#### Megan S. Saltzman, DPM

Dr. Saltzman earned her medical degree at Temple University School of Podiatric Medicine. She completed her residency at Penn Presbyterian Medial Center. Dr. Saltzman practices at Podiatry Care Specialists, PC in West Chester.



### Section of Pediatrics

#### Nicole M. Cicchino, DO

Dr. Cicchino earned her medical degree from the New York College of Osteopathic Medicine. She completed her residency at the Children's Hospital at Albany Medical Center. Board certified in the field of Pediatrics, Dr. Cicchino practices at Advocare's Broomall Pediatric Associates in West Chester.



#### Jeannette Giammattei, MD

Dr. Giammattei earned her medical degree at Temple University School of Medicine. She completed her residency at St. Christopher's Hospital for Children. She treats patients at Chester County Hospital with the CHOP Care Network – Pediatric Care.



#### Annamarie E. Koller, DO

Dr. Koller earned her medical degree from the Philadelphia College of Osteopathic Medicine. She completed her residency at University of Connecticut School of Medicine. Dr. Koller treats patients at Chester County Hospital with the CHOP Care Network – Pediatric Care.



#### Rajeev R. Shah, MD

Dr. Shah earned his medical degree from Albert Einstein College of Medicine. He completed his residency at St. Christopher's Hospital for Children. Board certified in the field of Pediatrics, Dr. Shah treats patients at Chester County Hospital with the CHOP Care Network – Pediatric Care. He is the hospital's Medical Director of Inpatient Pediatrics.



### Section of Neonatology

#### Rachel A. Fleishman, MD

Dr. Fleishman earned her medical degree from Albert Einstein College of Medicine. She completed her residency at Seattle Children's Hospital. Afterward, she finished her fellowship at the University of Washington. Board certified in the field of Neonatal-Perinatal Medicine, Dr. Fleishman is a Neonatologist at Chester County Hospital with the CHOP Care Network - Newborn Care.



▶▶ TO FIND A DOCTOR, CALL 800.789.PENN, OR SEARCH ONLINE AT [www.chestercountyhospital.org](http://www.chestercountyhospital.org)

L-R: Executive Board Members Bonnie Keyser, President; Gail Buchanan, Vice President; and Carol Duncan, former President. Also pictured is Christine Hasen, The Encore Shop Retail Manager



GREAT DESIGN DESERVES A SECOND ACT, ESPECIALLY WHEN THE RESULTS BENEFIT A WORTHY CAUSE. THE ENCORE SHOP SERVES CONSIGNORS WHO HAVE QUALITY MERCHANDISE TO OFFER AND CUSTOMERS WHO ARE SEEKING UPSCALE JEWELRY, WOMEN'S AND MEN'S CLOTHING, PLUS HIGH-END ACCESSORIES AND SMALL ANTIQUES.

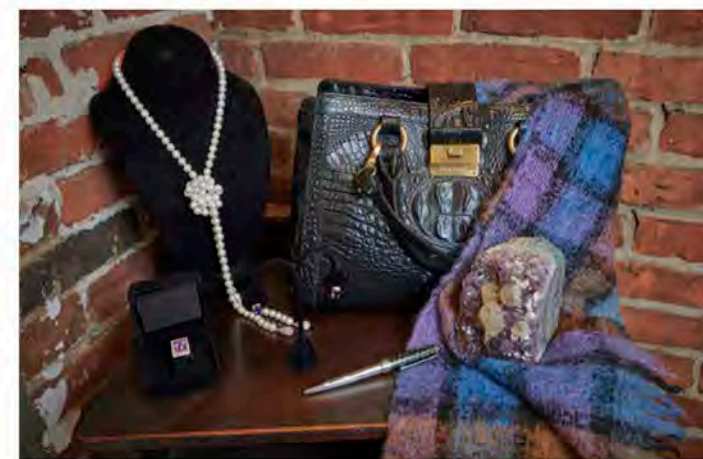
Founded by the Kennett Square Women's Auxiliary in 1973, the Shop is co-managed by five staff members, an Executive Board and more than 70 volunteers. All proceeds benefit Chester County Hospital and support the Women's Auxiliary pledges each year. These cumulative fundraising goals are set by the Auxiliary to support ongoing advances and initiatives at the hospital. The Encore Shop has donated more than \$1 million to the hospital since 2014.

In 2017, Encore underwent significant renovations to better serve customer needs. New flooring was installed and original brick walls were exposed. As a result of the revamp, Bonnie Keyser, President of The Encore Shop Executive Board said, "People are staying longer and really starting to discover us."

She continued, "Just last week we had a customer that was looking at some very high-end items. While browsing, she called her friend and said, 'I came into the The Encore Shop, I've driven by for years and have never stopped at the store but you must come. It is an upscale consignment shop.' This is exactly what we want The Encore Shop to convey and the message we want delivered to the public."

Retail Manager Christine Hasen added, "I have witnessed the amazing transformation that took place at Encore this summer. It was a long time coming. I am delighted to have played a part in the development of the plans and to witness the progress."

The Encore Shop is open each year from September through June, 9:30 AM to 4 PM. Consignments can be made Mondays, Wednesdays and Thursdays beginning at 9 AM.



**The Encore Shop** 1056 East Baltimore Pike | Kennett Square, PA 19348 | Telephone: 610-388-6269 | Email: [EncoreShop@Verizon.net](mailto:EncoreShop@Verizon.net)

Since 1893, the Women's Auxiliary has been a dynamic part of the hospital community and continues to be a component of what makes Chester County Hospital a warm and welcoming place. Today, more than 400 local women participate in the Auxiliary's 11 branches. The members sponsor a number of fundraising projects and events each year.



ADD FSC LOGO HERE



Call 610.738.2793 to update your mailing information.

# THE REGION'S #1 CANCER CENTER IS RIGHT HERE

Penn Medicine's Abramson Cancer Center at Chester County Hospital is built upon a reputation for offering cancer patients the most advanced treatments, close to home. Today, our commitment to this community grows with the expansion of our cancer services into a new, modern space. More surgeons, more doctors, more treatment areas, more access to Penn's world-renowned cancer specialists right here in Chester County - that's why your life is worth Penn Medicine.

Learn more at **800.789.PENN** [7366] or  
[ChesterCountyHospital.org/AbramsonCancer](http://ChesterCountyHospital.org/AbramsonCancer).

